

# THE SMART CHOICE

ISSUE 65 • JULY/AUGUST 2022



**Automotive  
Parts Distribution Ltd**  
Where professionals buy car supplies

**Great Value + Quality + Service = We Deliver!**

## **AIR-CON FOCUS** Taking the heat out of Air-Con servicing

**PLUS...  
TECHNICAL  
FOCUS**

**"WHITE BELT"  
TIMING BELT KITS**



**PLUS...  
NEW TO  
RANGE**

**ON AIR CON, TOOLS  
DIAGNOSTICS AND MORE**





# WELCOME TO SMART CHOICE

ISSUE 65 JULY/AUGUST 2022

## INSIDE THIS ISSUE

- |                            |                        |                                      |                            |
|----------------------------|------------------------|--------------------------------------|----------------------------|
| 2 DRAPER                   | 11 SMART TALK: DAYCO   | 20-21 SMART FOCUS: BRAKE ENGINEERING | 29 NEW TO RANGE: SGS GASES |
| 3 SMART FOCUS: BGA         | 12 FERODO              | 22 YUASA BATTERY                     | 30 COMMA                   |
| 4 UFI FILTERS / WYNN'S     | 13 GATES               | 23 COMMA                             | 31 SMART TALK: KLARIUS     |
| 5 SMART FOCUS: LIQUI MOLY  | 14 KYB / SCM TURBBO    | 24 GYS / RING                        | 32-33 SMART FOCUS: SMP     |
| 6 BLUE PRINT / FEBI        | 15 SMART TALK: FAI     | 25 SMART TALK: MAHLE                 | 34 WIX                     |
| 7 SIMON'S SPECIALIST STUFF | 16 INA / SHAFTEC       | 26 TECALEMIT                         | 35 TECHNICAL HOTLINES      |
| 8 SMART OFFERS: LAUNCH UK  | 17 SMART OFFERS: AUTEL | 27 BOSCH                             |                            |
| 9 PRODUCT FOCUS: EUROFLO   | 18 LUCAS OIL           | 28 BTN TURBO                         |                            |
| 10 SMART FOCUS: BECKERMANN | 19 SMART TALK: SKF     |                                      |                            |

### SMART CHOICE TERMS & CONDITIONS

Offers end 31 August 2022. All offers subject to availability and change without notice. Certain featured products may not be stocked by all members. Call your local IFA Member with any stock or pricing queries. These offers cannot be used in conjunction with any offer except at the discretion of your local IFA Member. All prices shown are exclusive of VAT. Pictures used are for illustrative purposes only and products are not shown at actual size or to scale. All product/marketing claims are

the responsibility of the company on behalf of whom they are made and are not the liability of the IFA or its agents. E & OE. All lease payment examples are based on a 60 month repayment period and with a NIL DEPOSIT facility. All lease figures quoted are subject to VAT and status. Alternative lease plans are available and can be tailored to your exact requirements. If you have any questions regarding lease facilities please call Alliance & General Leasing on 02478 220 000.

## GREAT DEALS ON THESE WORKSHOP ESSENTIALS!

Due to current fluctuations in raw materials and container costs, prices and availability may be subject to change. Call us for more details.

## TO FIND OUT MORE CONTACT YOUR LOCAL BRANCH TODAY!



### Draper Expert Universal Cooling System Pressure Test Kit (5 Piece) 53591



This capless tester uses the universal cone adaptor system to seal and pressurise the cooling system. Adaptors may be used to replace both screw and bayonet type cap fittings. The hand operated pressure pump has an integral gauge, adaptor quick connector and pressure release push pin. There are four universal cone adaptors to fit a wide range of vehicles. Supplied inside a sturdy blow moulded plastic case.

**ONLY £100.65**

### NEW Draper Storm Force® Auto-Darkening Welding Helmet 02516



This auto-darkening welding helmet instantly switches on when the arc is struck and rapidly changes to 9-13 shade level. The dark shade, sensitivity and delay time are adjustable using control knobs. The helmet is powered by a solar cell and a lithium-ion battery (replaceable). The 92.5 x 42.5mm viewing area provides very good visibility of the weld zone. It is suitable for TIG, MIG and arc welding, plasma cutting and also grinding. The comfortable headband is adjustable using the knob to enable an optimal fit.

**ONLY £27.39**

### Adjustable Wrench Set (3 Piece) 70409



- Forged from chrome vanadium steel hardened and tempered with a satin chrome finish
- Laser-etched measurement marking

**ONLY £29.43**

### NEW Metal Cutting Discs, 115 x 1 x 22.23mm (Pack of 100) 94772



- Designed for fast straight cutting on various metals including steel, structural steel and sheet metal
- Made from premium quality aluminium oxide, which has been resin bonded and reinforced with fibreglass
- Compatible with 115mm angle grinders with a 22.23mm bore
- Manufactured to EN12413 standards
- Manufactured to EN12413 standards

**ONLY £82.63**

### Draper Expert Mechanic's Tool Kit (127 Piece) 32027



- Comprehensive range of auto hand tools
- Manufactured from chrome vanadium steel
- Draper Expert HI-TORQ® and MULTI-DRIVE® sockets and spanners
- Reinforced lockable case with aluminium trim

**ONLY £223.44**

### Puller for Ribbed Drive Pulley 35-165mm 61790



- Made from heavy-duty carbon steel
- For use on crankshafts, alternators, air conditioning units and water pumps
- Low profile arms for use in restricted space
- Locking bolts prevent slipping under tension

**ONLY £37.98**

# PREMIUM QUALITY AFTERMARKET PARTS

Equivalent to or surpassing OE, Engineered in Great Britain.



## Lubrication

Oil Pumps | Oil Control Valves  
Sump Plugs | Sump Pans

#BESTUNDERPRESSURE

 ENGINEERED  
IN GREAT BRITAIN

## Steering & Suspension

Track Control Arms | Ball Joints | Stabiliser Links  
Strut Mounts | Tie Rod Ends | Bushes

# UNBEATABLE PRICES!

**£76.50**



**BGA: TRC0874 / OE: LR090503**  
Land Rover Range Rover Velar  
2017 - Front Left Upper

**£76.50**



**BGA: TRC0875 / OE: LR090502**  
Land Rover Range Rover Velar  
2017 - Front Right Upper

**£109.91**



**BGA: LP2340 / OE: 1717570**  
Ford Transit  
2011-2014

**£7.76**



**BGA: BU0120 / OE: 1J0501541B**  
Skoda Octavia  
2000-2010

**£3.24**



**BGA: SM9601 / OE: 7M0412331**  
VW Caddy  
2005-2009

**4BG**  
GROUP





## UFI FUEL FILTERS

24.061.01 – 24.095.00 – 24.095.01

### DIFFERENCES BETWEEN 24.061.01, 24.095.00 AND 24.095.01

What are the differences between the filters 24.061.01, 24.095.00, 24.095.01? Externally they are similar but differ in terms of **filtering element** and **group sensor**. The **filtering performance** is not the same, nor is the group sensor: in fact, by installing the wrong code, the life of the filter is not guaranteed and the ECU erroneously signals the presence of water in the system.

### HOW TO KNOW WHICH P/N TO INSTALL?

- Check the **OE code** on the UFI catalogue [www.ufi-aftermarket.com](http://www.ufi-aftermarket.com)
- Check which is the **correct reference** on the UFI catalogue
- Double verify the correct UFI code searching for the **month and year of production** of your vehicle in the list of the applications.

### SPARE PARTS CODE AND MAIN APPLICATIONS

#### 24.061.01

NISSAN Qashqai (J10E) 1.6 DCI (R9M) 96kW 130HP 09/11 › 01/14 | Qashqai+2 (JJ10E) 1.6 DCI (R9M) 96kW 130HP 09/11 › 01/14

#### 24.095.00

NISSAN Qashqai II (J11) 1.5 DCI 110 (K9K-636/K9K-646) 81kW 110HP 02/14 › 04/14

#### 24.095.01

NISSAN Qashqai II (J11) 1.5 DCI 110 (K9K-636/K9K-646) 81kW 110HP 05/14 | RENAULT Kadjar 1.5 DCI 110 (K9K) 81kW 110HP 06/15

### PLUS

- + High filtering performance.
- + High water/diesel separation efficiency.
- + High resistance structure with steel casing.
- + Bleed screw.
- + Cartridge made with the exclusive DFM (Deep filtration media) according to FormulaUFI.STRATIFLEX recipe.



See all our range visiting our Aftermarket catalogue [www.ufi-aftermarket.com/EU](http://www.ufi-aftermarket.com/EU)



[www.wynns.com](http://www.wynns.com)

# EXPERT ADVICE

## ANNUAL SERVICE

**PROBLEM: CARBON BUILD-UP IN THE OIL & FUEL SYSTEM CREATES POOR VEHICLE PERFORMANCE**

1

### CLEAN THE OIL SYSTEM OIL SYSTEM CLEANER

PN: 47244N 325 ML

- » Add to engine oil before an oil change to remove engine contamination
- » Reduces engine wear and protects the oil system between services
- » Protects new oil

2

### CLEAN THE FUEL SYSTEM TOTAL ACTION TREATMENT

DIESEL PN: 33092 PETROL PN: 33692 500 ML

- » Add to fuel tank to clean, restore and protect all major vehicle components
- » Cleans Injectors, Inlet Valves, Turbo, EGR, DPF/CAT and combustion chamber
- » Triple Action Cleaning: before, during and after combustion

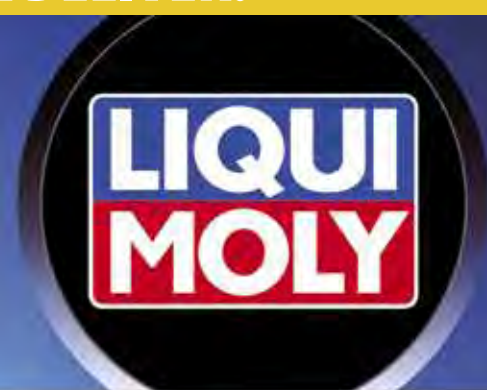


**PREVENTION IS BETTER THAN CURE**



# LOWER YOUR RUNNING COSTS

Clean engines use less fuel



The current prices at the filling station can bring tears to a driver's eyes. There's nothing we can do to change the prices per se, but there is a number of simple ways to reduce the running costs of a car. "It's not just fuel consumption – there are the hidden costs, too" explains David Kaiser, Head of Research and Development at LIQUI MOLY.

Every time the engine runs, combustion residues form inside it that also adhere to the injectors. This means that the petrol is no longer atomised so finely at the fine injection nozzles. As a result, combustion is no longer as efficient: lower engine output and higher fuel consumption. "In addition, more and more combustion residue is created, thereby exacerbating the problem," says David Kaiser. "It's a very gradual process, so the driver usually won't notice that fuel consumption is increasing." The older the car, the higher the mileage and the poorer the petrol quality, the greater the problem.

## Check out our purposely selected products.



### Injection Cleaner

Part no. 1803

Removes deposits on injection valves, intake valves, spark plugs and in the combustion chamber and prevents new deposits from forming. Eliminates starting problems and rough engine running. Maintains all components of the gasoline injection system. Protects the entire fuel system against corrosion. Improves throttle response and compression. Optimises the emission test values and the performance of the engine. Clean engines use less fuel and reduce the pollutant emissions.



### Super Diesel Additive

Part no. 1806

Removes deposits in the diesel injection system and in the combustion chamber and prevents new deposits. Maintains all components of the diesel injection system. Prevents any seizing up and gumming up of nozzle needles. Boosts the cetane number, improves the ignition performance of the diesel fuel and ensures smooth engine running. Protects the entire fuel system against corrosion and wear. Optimises the emission test values and the performance of the engine. Clean engines use less fuel and reduce the pollutant emissions.



### Engine Flush

Part no. 2678

Specially formulated combination of additives and carrier fluid. In combination with the carrier fluid, the highly effective detergent and dispersant additives dissolve sludge and lacquer formers. All types of oil-soluble and oilinsoluble residues are brought into suspension and removed during the next oil change. An engine which has been cleaned of deposits and contamination and which is then filled with fresh oil not contaminated with old impurities can develop its full performance characteristics. Wear in the engine is thus reduced and the service life is extended.



### Cera Tec

Part no. 3721

High-tech ceramic wear protection. Reduces friction and wear through ceramic compounds offering high chemical and thermal resistance. Prevents direct metal-to-metal contact, thus increasing the assembly service life. Reduces fuel consumption in gasoline and diesel engines thanks to the low-friction effect. Miscible with all commercially available motor oils and motor vehicle gear oils.

[www.liqui-moly.com](http://www.liqui-moly.com)

## Brakes for All Makes!



Blue Print now offer a complete brake friction range with **more than 3,400** components for Asian and European vehicle applications. Additionally our Brake Disc and Pads range **covers over 98%** of all popular cars on European roads (Year 2000 onwards).

Every Blue Print product is researched, designed and manufactured to be premium OE matching quality and undergoes stringent and regular quality checks to ensure optimum performance & long service life.

**Want quality and value? Choose Blue Print!**  
**Your Premium Quality Aftermarket Solution!**



Right First Time®

[www.blue-print.com](http://www.blue-print.com)

**bilsteingroup®**

## Wide Range, High Quality

With febi Cables



febi's wide range of over 2,000 cables are manufactured in OE Matching quality providing a direct replacement for the OE equivalent.

The extensive range includes Brake and Clutch Cables all produced following strict quality standards and offer excellent wear protection and a precision first time fit.

For your next repair choose febi cables backed by our 3-year guarantee for complete peace of mind.

To see the full range of febi cables visit: [partsfinder.bilsteingroup.com](http://partsfinder.bilsteingroup.com)

**Want quality and value? Choose febi!**  
**Your Premium Quality Aftermarket Solution!**

SOLUTIONS MADE IN GERMANY  
[www.febi.com](http://www.febi.com)

**bilsteingroup®**





# Simon's SPECIALIST STUFF

A selection of hard-to-find niche parts that are available!



**HOT PRICE!**  
CALL FOR  
OUR BEST  
PRICES!

584-0021

## PEF Additive Reservoir - No Fluid

• To fit: **PSA Group** PSA 407 508 I 508 SW I / C5 III C6



**HOT PRICE!**  
CALL FOR  
OUR BEST  
PRICES!

584-0022

## PEF Additive Reservoir - No Fluid

• To fit: **PSA Group** PSA 206/307/C4/XSARA  
1.6/2.0HDI



**HOT PRICE!**  
CALL FOR  
OUR BEST  
PRICES!

584-0029

## PEF Additive Reservoir - No Fluid

• To fit: **PSA Group** 3008 BlueHdi 2016 >



**HOT PRICE!**  
CALL FOR  
OUR BEST  
PRICES!

584-0030

## PEF Additive Reservoir - No Fluid

• To fit: **PSA Group** C5 Aircross 2018 / Dispatch 2016 >



**HOT PRICE!**  
CALL FOR  
OUR BEST  
PRICES!

770-0039

## Washer Pump - Duel Pump

• To fit: **Ford** Focus MK3 / Transit V363



**HOT PRICE!**  
CALL FOR  
OUR BEST  
PRICES!

777-0001

## Water Pump Connector

• To fit: **Vauxhall** Alga, Astra, Mk4/45, Corsa C,  
Combo, Meriva & Tigra



**HOT PRICE!**  
CALL FOR  
OUR BEST  
PRICES!

217-0004

## Clutch Master Cylinder - OEM

• To fit: **Ford** Transit MK8



**HOT PRICE!**  
CALL FOR  
OUR BEST  
PRICES!

375-0021

## Fuel Filter

• To fit: **Ford** Transit Tourneo 1.5 TDCi 18 >



**HOT PRICE!**  
CALL FOR  
OUR BEST  
PRICES!

705-0034

## Thermostat Module - OEM

• To fit: **PSA Group** Berlingo/ C3/ C4/ DS3/ DS4/ DS5.  
208 / 308/ 508/ 2008/ 3008/ 5008/ Expert/ Partner



**HOT PRICE!**  
CALL FOR  
OUR BEST  
PRICES!

705-0035

## Thermostat Module - OEM

• To fit: **Ford** Cmax/ Grand C Max Focus MK3/Kuga/  
Mondeo V



**HOT PRICE!**  
CALL FOR  
OUR BEST  
PRICES!

838-0008

## NOx Sensor

• To fit: **PSA Group** c3/ c4/ ds3/ ds4/ ds5/ 208/  
308/2008/3008/5008/ Partner / Vauxhall Grandland X



**HOT PRICE!**  
CALL FOR  
OUR BEST  
PRICES!

838-0015

## NOx Sensor

• To fit: **PSA Group / Vauxhall** PSA Group. C5 /  
Dispatch/ 508/ 3008/ 5008 / Exptert/ Raveller/  
Expert - BlueHdi

Due to current fluctuations availability of some items may be subject to change. Call us for more details.



# LAUNCH UK

www.launchtech.co.uk

**NEW**



**ONLY £2495**

5 Year Lease £13.24pw

3 Years of Software Updates

**£2795**

5 Year Lease £14.84pw

INCLUDES  
Haynes Pro  
Electronics!

**AVAILABLE AS STANDARD**  
2 Years of Software Updates  
PLUS: 2 years warranty!

## X-431 PRO 5 LINK

- Local intelligent diagnostics
- Remote diagnostic, using the Launch SRD platform
- Compatible with multiple protocols
- Supports DOIP and Pass Through Technology
- One year Launch CarSet electronics powered by Haynes Pro

**NEW**



**ONLY £4750**

5 Year Lease £25.21pw

3 Years of Software Updates

**£4999**

5 Year Lease £26.53pw

INCLUDES  
Haynes Pro  
Electronics!

**AVAILABLE AS STANDARD**  
2 Years of Software Updates  
PLUS: 2 years warranty!

## X-431 EURO TAB III

The Euro Tab III is a newly-developed high-end vehicle diagnostic device. Using the Android 9.0 operating system the Euro Tab III builds on the highly regarded Launch diagnostic technology, offering worldwide vehicle coverage, powerful diagnostics and numerous special functions.

New for the Euro Tab III is the Smartlink® C VCI. This advanced module allows for communication.

- Supports Topology, DOIP and Pass Through Technology
- Remote diagnostic, using the Launch SRD platform

## X-431 PRO 5 PLUS

- OS: Android 9.0
- CPU: 1.8 GHz 8 Cores
- 4GB memory
- Internal 64GB + microSD card 32GB
- 10.1" touch screen
- Battery: 7000mAh
- Wifi: 2.4GHz and 5GHz
- Camera: Front 5MP, Rear 8MP

**ONLY £1950**

5 Year Lease £10.35pw

2 Years of Software Updates  
PLUS: 2 years warranty!

1 year Haynes Pro Electronics!

## X-431 PRO Turbo

- OS: Android 9.0
- CPU: 2.0 GHz 4 Cores
- Internal memory: 3GB
- Storage: Internal 32GB
- Screen: 8" 1280x800 IPS
- Battery: 5000mAh
- Wifi: 2.4GHz and 5GHz
- Camera: Front 2MP, Rear 5MP

**ONLY £1395**

5 Year Lease £7.40pw

2 Years of Software Updates  
PLUS: 2 years warranty!

## CRP 129 EVO

- Full OBD II functions
- Data record and replay
- DTC read and clear, Live data of 4 systems (Engine, AT, ABS, SRS)
- Diagnostic report
- Feedback function
- Software online update

**ONLY £329**



## X431 EURO TAB 2

X431 Euro Tab II is a high end diagnostic tool with docking station. Developed around Android version 7.1 with new features such as DOIP, J2534 pass-through online programming, DCT-based database, intelligent diagnosis, etc. It inherits all the excellent functions of the previous generation tool. It supports dual 5GHz WiFi communication.



10" SCREEN



WIFI



ANDROID



BLUETOOTH

**X431 EURO TAB 2 ONLY**

**£3250**

5 Year Lease £17.25 pw

## Automatic Transmission Cleaner & Fluid Exchanger

- Detergent based cleaning cycle
- Standard adapter set PLUS optional set cover most vehicles
- Connects to most transmission units, including double clutch & CVT types
- One year **FREE** access to Launch UK database:
  - transmission type
  - fitting location photographs
  - oil quantity
  - oil level check points
  - correct procedures

**ONLY £2995**

5 Year Lease £15.90 pw

'Sealed for life' transmissions are a thing of the past

### Smoother gearshifts

New synthetic fluid restores lubricating & friction coefficients to original specifications

### A lucrative opportunity for new work!

Automatic transmissions are no longer 'sealed for life'. Vehicle manufacturers have started to add a complete fluid exchange in the service schedule at around 75,000km (46,000 miles).

Just draining removes only 45% - 60% of the transmission fluid, as the fluid does not drain out of the torque converter, cooler lines, valve body, etc. The CAT501S consistently and reliably provides a 99.9% fluid exchange thanks to the load cell weighing technology and advanced software.



## Bluetooth Battery Tester



**BST360 ONLY**  
**£85**

For leasing Terms and Conditions please see page 2.

## TS Gun (TPMS Wand)



**1739 ONLY**  
**£195**

## SMOKE 2 DIAGNOSTIC LEAK DETECTOR, SMOKE MACHINE

The Launch Smoke 2 v2.0 diagnostic leak detector is a specially engineered device for EU vehicles, operating at a higher pressure than EVAP models. Perfect for finding leaks in petrol and diesel turbo systems, as well as inter-coolers, exhaust systems etc.

**SMOKE 2 ONLY**  
**£595**



To find out more, please visit [www.launchtech.co.uk](http://www.launchtech.co.uk) or ask your local branch.



# EuroFlo

ULTRA PREMIUM EMISSION SYSTEMS

Focus on  
Quality

EuroFlo is completely focused on ticking every box in the ongoing quest to deliver  
**THE MOST POWERFUL EMISSIONS PROGRAMME**

## Quality of Materials

EuroFlo continue to use the same high-quality raw materials, despite the fact that prices on those raw materials have risen by 100% or more.

EuroFlo silencers are fully aluminised, using double layer 0.6mm steel for silencer bodies, 1.5mm steel for baffles and 1.5mm or 2.0mm steel for pipe construction.

EuroFlo silencers feature unique sound absorption chambers which are based on mechanically assembled interiors. These interiors are not welded nor filled with e-glass, thus assuring long lasting performance.

## EuroFlo Performs as O.E.

When creating new applications, EuroFlo's benchmarking and reverse product engineering is based solely on the Original Equipment. This allows us to accurately identify and reproduce the O.E. level of back-pressure and noise output.

## Leak Testing

Silencers are the most complex components in exhaust manufacturing and leak testing validates the overall quality of production and welding.



EuroFlo's quality requirements demand that numerous leak tests are performed at various stages throughout production.

This is extremely important in allowing the engine to keep running perfectly without fuel or oxygen losses, thus maintaining maximum power, minimising fuel consumption and lowering emission levels.

## 'Bullet Proof' Jigs

Jigs are an essential tool for exhaust system production and a major investment.

Exhausts are increasingly complex in design and in order to achieve our market leading quality standards, our jigs have had to become even better.

When properly engineered, constructed and maintained, jigs are the best practical way of guaranteeing intricate and complicated geometric specifications are met, and consistently ensuring good fitment experiences.

In order to prevent thermic deformation, a great deal of planning goes into the location of fixation devices such as pins, levers, clamps and stoppers.



Highly engineered, heavy duty 'bullet proof' jigs are a feature of EuroFlo production, ensuring high quality products and consistent fitment every time.

## Robot Welders

Our robot welders maintain the consistently high quality of production. This means that weld splash is kept to an absolute minimum and all welds are neat



and uniform, without any porosity and no undue concavity or convexity.

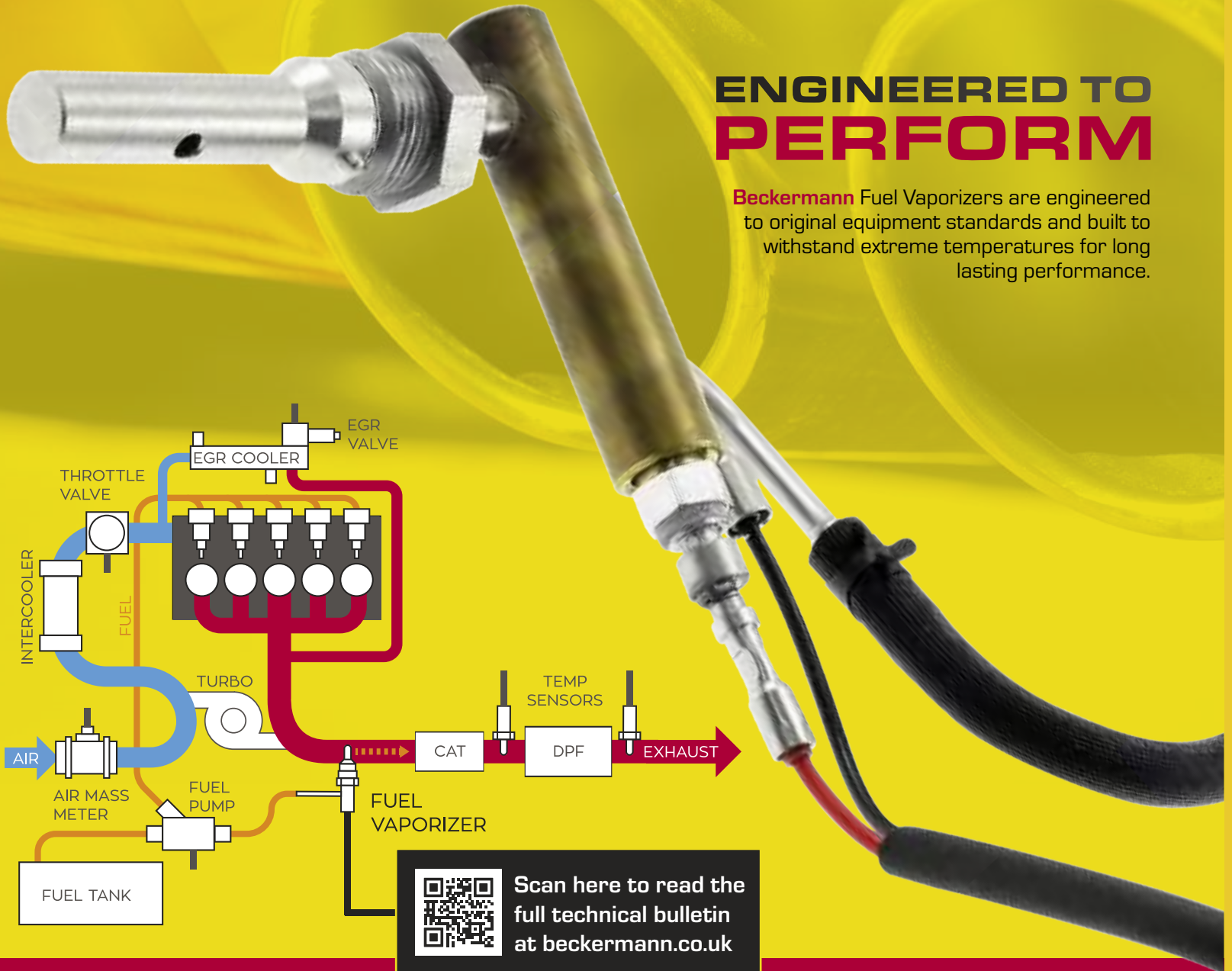


**EuroFlo**  
ULTRA PREMIUM EMISSION SYSTEMS

- ✓ Ultra-premium quality
- ✓ Industry leading 3 Year Warranty
- ✓ Unbeatable competitiveness
- ✓ Relevant & rapid development programme - A minimum of 15 new references each month
- ✓ Industry leading range
- ✓ Industry leading availability
- ✓ The best, most accurate cataloguing
- ✓ Fast & frequent logistics to the vast majority of stockists

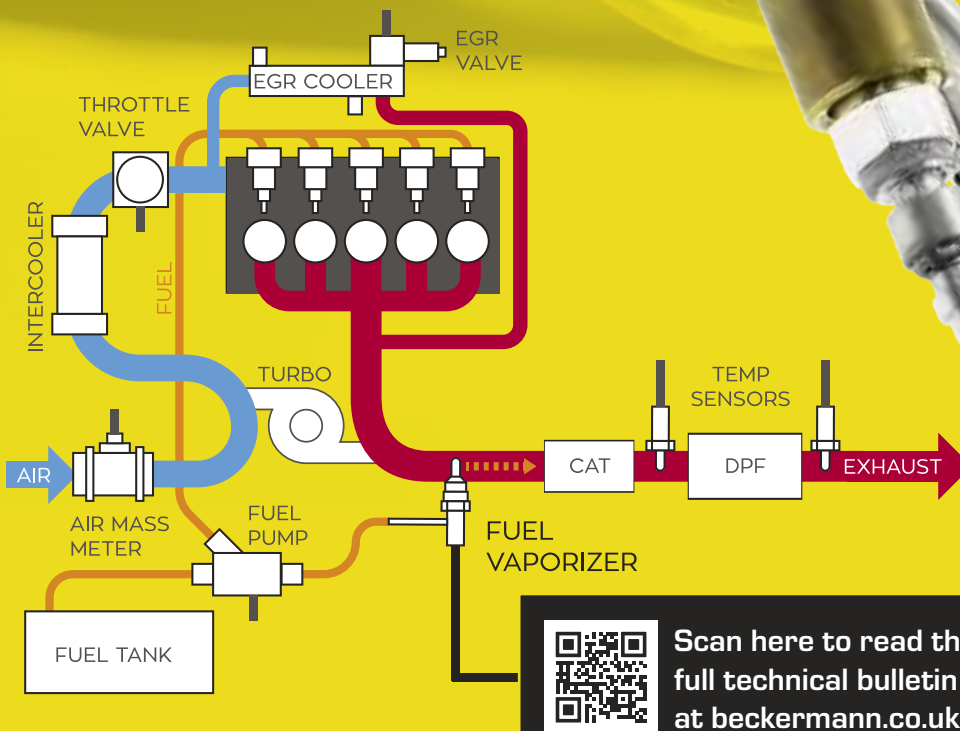


For more information please visit [www.euroflo.co.uk](http://www.euroflo.co.uk) or contact your local stockist


**BECKERMANN™**


## ENGINEERED TO PERFORM

Beckermann Fuel Vaporizers are engineered to original equipment standards and built to withstand extreme temperatures for long lasting performance.



## What are Fuel Vaporizers?

The Fuel Vaporizer is a relatively new component designed to improve the DPF regeneration process and further reduce harmful emissions.

DPF regeneration requires extremely high temperatures for soot to be removed from the DPF by combustion. When normal driving conditions do not allow for this temperature to be reached in the exhaust system additional processes must be introduced to raise the heat.

Traditionally, post injection of unburned diesel fuel into the combustion chamber provides the catalyst and raises temperatures. However, this has been found to cause oil dilution leading to premature engine wear or more frequent servicing.

Fuel Vaporizers go some way to solving this problem, lowering emissions whilst prolonging engine life. Rather than being injected directly into the combustion chamber, fuel is directed to the Fuel Vaporizer. The Vaporizer then uses an integrated, electrically heated glow plug

to evaporate the fuel before injecting it into the exhaust gas stream ahead of the catalytic converter / diesel oxidation catalyst. Vaporized hydrocarbons are then burnt on the catalytic converter, releasing energy from exothermal chemical reactions and raising the temperature before the DPF allowing for regeneration to occur without oil dilution or the need for additional cooling.

With the introduction of Fuel Vaporizers, vehicles can achieve more frequent DPF regeneration under lower loads and even at idle.

**EXTENSIVE RANGE** Available now from **Beckermann**

 **BECKERMANN.CO.UK**



## TECHNICAL FOCUS



# DAYCO 'WHITE BELT' TIMING BELT KITS

Dayco, a leading engine products and drive systems supplier for the automotive, industrial and aftermarket industries, supplies a number of important, original equipment (OE) components, to vehicle manufacturers (VMs) across Europe and beyond.

In addition, as an established power transmission system expert, it is a preferred partner for many VMs and its considerable expertise has enabled it to develop highly efficient solutions for their many and varied needs, particularly as they try to meet the emissions targets demanded by governments around the world.

Among these many product developments is the Dayco High Tenacity (HT) or 'white' belt, which, with its PTFE film on its inner teeth and fibreglass core, has become the mainstay timing belt for many engine variants used for multiple applications by numerous VMs.

When faced with a timing belt replacement, the only way to replicate the quality of the OE belt is to fit another white belt, which is only possible by fitting Dayco. So, for the peace-of-mind of the owner, as well as the most profitable result for the workshop, a full timing drive system replacement is the only option.

Dayco's commitment is to provide technicians with timing belt kits that, in addition to the normal belts, tensioners and idlers, also contain all the other components that the VM specifies need to be replaced during the vehicle's scheduled change interval. This not only helps the technicians undertaking the work, it also provides peace-of-mind for workshops because a full system overhaul has been able to be carried out.

Among these additional items are crankshaft pulley bolts, which when specified for replacement is usually because they are stretch bolts and therefore, for safety reasons, must not be reused. To provide the greatest level of transparency, Dayco distinguishes these kits with the letter 'K' at the end of the part number.

"In order for them to complete a full and thorough repair, it is vital that technicians replace all the components and ancillary items such as nuts, bolts, studs and circlips that the manufacturer has stipulated must be changed at the designated service interval," explains Dayco's National Sales Manager, Steve Carolan.

"Although without access to the manufacturer's service and repair information, it is sometimes difficult for technicians to find the precise details of which additional items this requirement applies to, we have made things considerably easier for them by including all the items that need to be replaced in the kit. So, the message is: 'If it's in the box, it must be changed'.

"OE derived components provide workshops with a number of tangible benefits from premium quality and fit first time installation, to increased durability and reduced warranty claims. In addition however, when they fit an HT water pump/timing belt kit, Dayco can also provide them with an even greater level of reassurance by offering the opportunity to extend the existing two-year warranty by a further year.

"The Long Life +1 year warranty is a perfect example of how Dayco's technology can provide workshops with a 'real-world' competitive advantage over those fitting other brands. It also gives the motorist a level of protection that cannot often be matched, even by the franchised dealer.

"So, the combination of guaranteed OE quality products and product support such as the Long Life +1 year warranty, makes Dayco a great choice for workshops."

## Technical Tips

There are numerous tips that Dayco recommends technicians bear in mind to promote best practice when replacing primary and auxiliary drive components, amongst others, these include:

- ensure the engine is cool, ideally not run for at least four hours
- the working area air temperature should be around 20°C, the same as the parts to be installed
- disconnect the battery
- if needed, remove the spark plugs
- only rotate the engine in its normal operating direction
- ensure that replacement belts are treated with respect and not handled with greasy hands, crimped or otherwise damaged before installation
- when fitting a replacement water pump, sealing compound should only be used when the gasket is not included, otherwise just wet the mating surfaces and the supplied gasket with coolant
- as Dayco kits contain all the components that VMs state must be changed in accordance with the specific service procedure, technicians must fit all the components supplied in the relevant Dayco timing or auxiliary belt kit, during the replacement process
- specific torque sequences and values must be followed

In short, the basic principle for technicians is to simply follow the VM's instructions, without adding 'just in case' additions like lots of sealer or thread adhesive etc. In other words, don't improvise and fit it the way they think is best, just follow the VM directive, which is best.

For more information regarding the OEM quality power transmission products in the Dayco range, visit: [www.dayco.com](http://www.dayco.com)

**DAYCO**  
MOVE FORWARD. ALWAYS.™

# To find out more contact your local branch today!



# CONTINUOUSLY IMPROVING OUR PADS



IMPROVED/ADDED  
DIRECTIONAL  
ANTI-NOISE SHIM



IMPROVED CHAMFERS,  
FROM PARALLEL  
TO RADIAL



LESS NOISE   
BETTER COMFORT - LESS VIBRATIONS  
MAXIMISE PERFORMANCE



## GREAT STOPPING STARTS WITH FERODO.

The latest technical enhancements to our brake pads, such as radial chamfers, arc-shaped cut-outs and anti-noise shims, mean we bring vehicles to a halt safely, comfortably and quietly. Test for yourself.

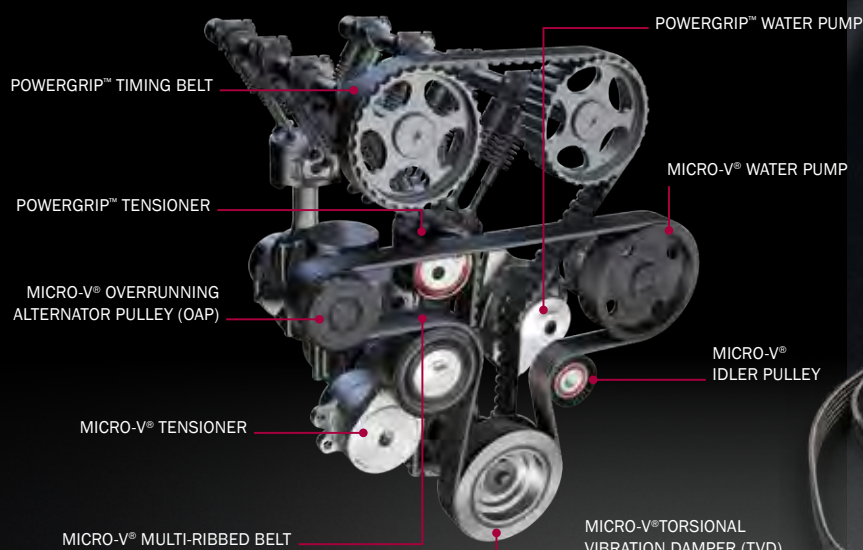
[www.ferodo.co.uk](http://www.ferodo.co.uk)

CHOOSE THE POWER OF PERFORMANCE.  
CHOOSE FERODO.





**DRIVEN BY POSSIBILITY™**



## THE SUM OF ALL PARTS: A WINNING TEAM

Belt drive components work together. The problem is, if they are not all replaced at the same time, they wear at different rates. The overall performance of the drive system starts to fade. There's a parallel for winning motor racing teams. They know that one poor performance can cost them the Championship.

With a wide range of OE partners, Gates understands what it's like to be part of a winning team. That's why whenever it's time to change the belt, we recommend replacement of all the drive system components together, as a single unit. Micro-V® and PowerGrip™ kits, from Gates, make this easy. Get all of the OE quality parts you need for a complete overhaul in a single box.

**Gates. Reliable OE quality, better performance, fewer comebacks and happier customers.**



MICRO-V® KITS

POWERGRIP™ KITS

## E-START™ MICRO-V® KITS A SMOOTHER WAY FORWARD

### SOLUTIONS FOR THE HYBRIDS OF TODAY AND TOMORROW

Gates is working with the world's major automotive manufacturers to develop more fuel efficient ways to reduce CO<sub>2</sub> and other harmful emissions.

### GATES® E-START™ MICRO-V® BELTS AND KITS: THE LATEST AND MOST ADVANCED OE TECHNOLOGY FOR YOUR VEHICLE

Gates is the name behind fuel saving and engine emissions reducing technological solutions such as Belt-driven Starter Generator (BSG) systems. They enable engines to shut down at a red light, for example, before re-starting quickly and smoothly when acceleration is desired. BSGs recuperate energy during braking, serve as generators to maintain the charge of the battery and provide an additional boost of power. That kind of strength and versatility demands a very special type of belt. The Gates E-Start™ Micro-V® belt leads the way.

**TO FIND OUT MORE CONTACT YOUR LOCAL BRANCH TODAY**





## LEADING THE WAY

KYB IS THE **NUMBER ONE**  
SUPPLIER OF OE SHOCK ABSORBERS  
TO CARS LEAVING UK PRODUCTION LINES



Original  
Equipment  
Manufacturer

All **KYB** shock absorbers are made in the same factories and using the same materials as OE. That means you can rely on **KYB** to provide the same world class quality for your replacement parts.



[kyb-europe.com](http://kyb-europe.com)



KYBSuspension



@KYBEurope



KYB-Europe



KYBEurope

For Genuine OE Quality, with OE Parts and an unrivalled warranty  
**Choose SCM Turbo Service-Exchange**



**SCM**  
TURBO

Authorised distributors for:



**BorgWarner**

**HOLSET**  
TURBOCHARGERS

**12 MONTH  
NO QUIBBLE  
REPLACEMENT  
GUARANTEE**



# FAI

## HAVE YOU EVER WONDERED WHY SOME OF FAI'S LINK RODS HAVE A RED SECURING CLIP?

FAI pioneered and launched a new design of link rods several years ago for a select group of applications - each item fitting vehicles that were known to be susceptible to premature failure due to the original design. More specifically, the ball pin housing has been completely reengineered to improve both the brute strength of the housing - increasing the pull-out force and reducing rotational torque

### WHAT IS ROTATIONAL TORQUE AND WHY IS LESS OF IT A GOOD THING?

High rotational torque puts stress on the casing internals of the ball joint; a process which is inevitable as the ball pin absorbs body roll during cornering. FAI's patented design allows the ball joint to rotate more freely and as a result, increases efficiency by 44%. The impact of this improved design means our red-clip link rods instil confidence throughout the supply chain, and ultimately improves the longevity of the part.

### WHY DOESN'T FAI USE THIS TECHNOLOGY ON ALL OUR PARTS?

Really and truly, the process isn't required across the range. As one of the best-established suppliers of Steering & Suspension parts, we work closely with fitters, our partnered factories and analyse data to identify the parts that warrant significant investment in re-designing. We currently have a little over 60 in range, but this number will continue to grow over the coming months and years as manufacturers persist in using the plastic cap style housing.

### WHAT VEHICLES BENEFIT FROM OUR ADVANCED DESIGN?

The 60 parts cover hundreds of models as manufacturers share platforms and the related componentry. Our customers can easily identify an FAI part which utilises this technology by the red securing clip visible at the bottom of the assembly. Some of our biggest sellers include common applications like the Ford C-max, Focus II, Mondeo IV, and Transit Connect, to name just a few.



## FOR MORE INFORMATION CONTACT YOUR LOCAL BRANCH TODAY!



### What's new from FAI?



We have added a large quantity of S&S parts to our range over the past 12 months, with a focus on several popular electric vehicles. Many models have shed weight over recent years, opting for aluminium componentry over steel but this weight and much more has been added by battery units for electric powered cars. This added weight undoubtedly puts added strain on Suspension set-ups with vehicles such as the Mercedes EQC weighing in at 2425KG! Our development team always aims to be one step ahead so that we've got you and your customer covered when the time comes.

# CLEVER COOLING.



**The cooling systems in today's engines are becoming ever more complex, so installing and maintaining modern water pumps presents a new challenge to workshops.**

The latest INA Thermal Management Modules from Schaeffler can regulate several engine-related coolant circuits at once, allowing the engine to reach optimal operating temperature faster, while also helping to reduce fuel consumption and CO<sub>2</sub> emissions. And because they are from Schaeffler, every OE component you need for a professional repair is included - right down to the last nut, bolt and washer. Trust Schaeffler quality - choose INA cooling system repair solutions.

[www.repxpert.co.uk](http://www.repxpert.co.uk)  
[aftermarket.schaeffler.co.uk](http://aftermarket.schaeffler.co.uk)

**SCHAEFFLER**

## ELECTRONIC POWER STEERING (EPS)



## COMMON FAULTS AND BEST PRACTICE

- Always get your customer to code read a vehicle before determining fault. Just because your steering isn't working does not mean it is the steering product that has failed.
- If the electronic part of the product has failed, there will always be a fault code.
- If there is a mechanical failure (e.g. Notchy) there may not be any fault codes active. This will be a bearing or travel issue. Fault codes will only become active if an electrical fault is identified.
- All active fault codes must be cleared before fitment.
- If fault codes are not cleared, they will be transferred to the new EPS unit. If this happens, the unit will become inoperative. The unit will need to be reset at supplier level.
- "Inactive" faults are also an issue, when they become active it will cause a dash light but the EPS system will still be operative. They normally reset themselves and the dash light will turn off.
- Please be aware that Racks and Columns may need some sort of calibration. Normally Torques sensors or end stop learning procedures.
- Shaftec re-flash all units with the most current steering software, if it is incompatible with the vehicle, it maybe because the vehicle requires a software update. This can be done through good-quality diagnostic equipment.

### Things that can affect Shaftec EPS product.

- Flat battery – If your steering issue is intermittent, check the battery. There are battery monitors and various sensors on modern vehicles, which will switch off the steering system if a charge issue or flat battery is detected. Always recommend your customer checks the battery and charging systems before replacing any EPS product.
- If a vehicle has been jump started at any point, a power surge from this could cause EPS fault codes.
- ABS Modules, ESP Modules and any other vehicle software that is linked through the ECU to the steering system can cause the power steering to turn off.

**TOP QUALITY, WIDE RANGE, GREAT AVAILABILITY**

Remanufactured or new, it's what we do.

**SHAFTEC.COM**

**SHAFTEC®**  
**DRIVE. STEER. STOP.**



**AUTEL****SMARTER DIAGNOSTICS****MAXISYS906S<sup>PRO</sup>****£1,795** excl. VAT**£9.53pw** excl. VAT**NEW**  
replaces the  
MS908S

Includes:

- Extended 2 years warranty
- Extended 2 years software free updates
- MaxiCVI V200 Bluetooth VCI



MaxiSYS MS906Pro is an advanced diagnostic tablet compatible with U.S., Asian and European vehicles, 1996 and newer. This 8-inch wireless Android-based touchscreen tablet performs extensive vehicle diagnostics including an all systems scan with ADAS identification, the ability to read/erase codes, view freeze frame and live data, bi-directional control including active testing, coding and adaptations. Includes customizable Pre/Post

scans, extensive service menu with 25 of the most of common maintenance tasks. FCA Access via AutoAuth account, starting and charging system analysis with MaxiBAS BT506 Bluetooth tester and terminal cables purchase, ADAS Calibrations capable (frame system and software upgrade required).

**Specifications**

- Android 10 OS
- Fast Qualcomm Octa-Core 2.3G + 4\*A53 1.7G processor
- Huge 128GB internal memory
- 3 x Ultra fast Wi-Fi connectivity
- 8" 1920 x 1200 high-resolution touchscreen
- 5 MP front camera and 16 MP rear camera
- 11,600mAh Lithium-Polymer Battery
- MaxiVCI V200 wireless Bluetooth vehicle communication interface
- DoIP and CAN-FD compatible

**Software Updates + Bolt-ons****DS808EU****£799**

excl. VAT

**NOW WITH 2 YEARS UPDATES INCLUDED!**

The DS808EU is Autel's base Pro-Range tool. The DS808EU is the 'little brother' of the MaxiSYS MS906 and the UK edition is loaded with the **same software as the MS906**, making the DS808EU fabulous value for money.

The DS808EU is powerful with 4 core processor, colour 7" touch screen, built in lithium battery, 32GB of internal memory + 32GB of external memory and Smart AutoVIN technology. The DS808EU is a smaller tablet than the MS906 and is not supplied with pre-OBD connectors. This stream-lining enables us to significantly lower the price to our end customers.

**TS508 WIFI****£399**

excl. VAT

UPDATE  
USING  
WI-FI

includes:  
2 years warranty  
Free updates  
for life



The MaxiTPMS® TS508 Wifi has all the features of the TS508. In addition it has a WiFi module so you can update the tool using Wifi, rather than having to connect the TS508 to your PC.

**FEATURES**

- Reading and copying of universal TPMS sensors
- Prints sensor data via USB
- Autel TPMS sensors programming
- Inputs sensor ID in the control unit
- 4 x MX Sensor programming methods
- High Vehicle coverage
- Sensor learning via OBD
- TPMS Fault scanning
- TPMS DTC read and clear

**For more information contact your local branch today!**



# ARE YOU PAYING MORE FOR LESS?

**SAFEGUARD™**
**ETHANOL**  
 FUEL CONDITIONER  
 with  
 STABILIZERS


Have you noticed a reduction in your vehicle's MPG since switching to E10? Combat rising fuel prices and reduced fuel economy by choosing **Lucas Safeguard™ Ethanol Fuel Conditioner with Stabilizers**. It's been specially developed to stabilize and prevent phase separation in ethanol-blended fuels. **Lucas Safeguard™ Ethanol Fuel Conditioner with Stabilizers** ensures a more complete combustion and restores lost engine power. A 473ml bottle of Safeguard™ treats up to 302 litres of ethanol-blended fuel, making it a more cost-effective solution when compared to using Super Unleaded Fuel. It's suitable and safe to use in cars, vans, motorcycles, boats and even garden equipment.


**LUCAS OIL**
[LucasOil.co.uk](http://LucasOil.co.uk)

#40670

#40576

## Contact your local branch to find out more



SKF®

# Good is in the detail

## SKF Engine Timing Belt kits

SKF introduced the timing belt kit concept to the automotive aftermarket over 30 years ago and continue to pursue the best products to offer our customers.

When the car has reached the service period recommended by the manufacturer, all parts of the timing drive should be replaced at the same time as they are all subjected to wear and tear. Whether the car has a timing belt or a timing chain system, SKF offers complete kit systems solutions containing all the necessary components and all fixings and seals required for a professional and complete belt replacement.

SKF has over 1000 different kit solutions, spanning from complete water pump and timing belt kits and timing chain kits, to mid-size kits and single component kits, providing customers with the greatest flexibility made possible; SKF kits content can be customized on customer specific demand.

### The kits content

*Timing belts* must meet the highest production standards and quality; from HNBR rubber material, Glass cord, to Aramid reinforcement, SKF belts follow strictly OE technology and high-grade materials in compound formulations. SKF aftermarket timing belts meet or exceed OE standards of function, performance, and fit, and are resistant to heat, wear, and contamination.

*Timing tensioners* are highly precise components designed to optimize the belt tension by automatically making up for the thermal variations in the engine. The bearing, seal, spring and the grease are critical sub-components in the tensioner. SKF bearing and seals expertise has allowed an optimal materials selection for high loads and temperatures resistance. Our tensioners are optimized for each application to have the OEM performance and endurance.

*The SKF Aquamax* water pumps are already a reference in the market. The characteristic for the Aquamax pumps is that only the best mechanical seal materials are used in combination with the highest quality bearings. The performance is controlled for each reference to assure that the pump has the same hydraulic performance as the OE water pump. The SKF Aquamax pumps have even gone beyond the performance of the OEM pumps by improving the robustness compared to the OE pump when the OEM pumps have shown some fragility in the field.

Our central focus is to offer the most reliable quality maintenance kits with components and fitting accessories adapted for each car application. SKF timing kits matches the OEM specifications and covers 97.5% of the car park range available in the market. Customers can choose the kit solution that fits best their possibilities: single kit components for an individual repair solution, timing belt kits without the water pump for an economic service. Water pump and timing belts kits for a complete system revision at an optimized service cost.

Timing chain kits for a complete overhaul system repair revision.

Timing chain kits without sprockets

Timing chain kits with reduced fittings content | customized on customer request

Not inspecting the car at the interval recommended by the car manufacturer can result in having to replace the complete engine. Make it safe and reliable with SKF timing kits solutions.

### Technical Tips for timing kit replacement:

#### *Inspect the Vehicle*

Inspection is the most critical first step that must be performed before the first bolt is removed from the timing belt cover. The inspection needs to include looking for the usual leaks and inspecting the oil, motor mounts and accessory drive belt components. The inspection has a few benefits.

#### *Mileage and Time*

The time period is just as important as the mileage because the belt is exposed to an environment that breaks down the belt's materials when it is not used. This type of damage is called oxidation, and it can be caused by oxygen and the ozone.

#### *Count The Teeth*

Use the VIN and/or engine code to order the replacement belt and use a high-quality belt that matches the OEM specifications like SKF. This is important to guarantee that you get the right belt.

#### *Take a Picture*

Use your phone to take a picture of the old belt on the vehicle to help you make sure the new belt is fitted identically. It will help you save time.

#### *Replace the Water Pump*

If the water pump is driven by the timing belt, it is recommended that it be replaced at the same time. There is no guarantee that it will not fail until the next service interval is due, and, if the pump fails, it could contaminate the belt and cause tension and alignment problems. It is also an excellent time to perform a cooling system flush and fill because typically the intervals are very close together.

At all times follow strictly the car manufacturer instructions and recommendations.

## What is inside matters

Beyond dimensional fit parts there is a technology in materials, design and performance that follows each component that has been tested and secured per car application. **SKF systems knowledge expertise is inside our kits.**

For technical support and insights, visit: [vehicleaftermarket.skf.com](http://vehicleaftermarket.skf.com) or scan the QR code to know more about the SKF Steering & Suspension products.



[SKFAftermarket](https://www.youtube.com/SKFAftermarket)

[SKFAutomotive](https://www.facebook.com/SKFAutomotive)

[skfautomotive](https://www.skfautomotive.com)

Contact SKF Technical Support to help resolve your automotive problems and answer your questions:

[helpline@skf.com](mailto:helpline@skf.com)





FOR QUALITY YOU CAN RELY ON  
IT'S ALWAYS BEEN  
**BRAKE**  
**ENGINEERING**

COVERAGE, QUALITY,  
BACKED BY  
**40-YEAR**  
SERVICE YOU CAN TRUST.

**100%**  
NEW PISTONS USED  
IN EVERY UNIT

**CALIPER**  
REMANUFACTURING  
IS RUN 24 HOURS  
5 DAYS A WEEK

**WE CAN**  
REMANUFACTURE IN  
**4/5 DAYS**

**92%**  
MARKET COVERAGE

EVERY 5TH  
CALIPER WE  
REMANUFACTURE  
IS DIFFERENT

**100%**  
NEW SLIDERS AND SEALS  
USED IN EVERY UNIT

**ORIGINAL AFTERMARKET** SINCE 1981

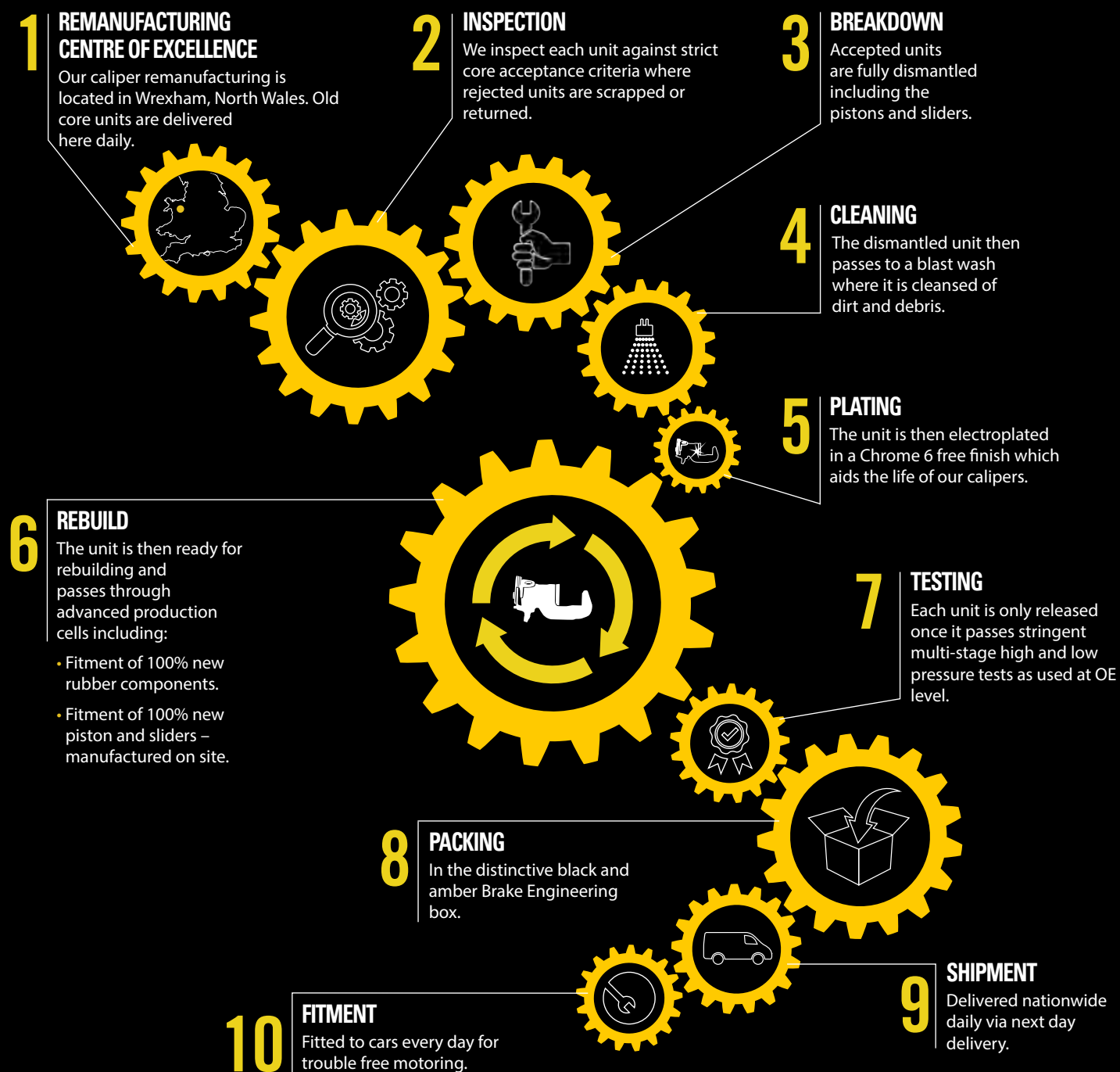
**BRAKE**  
ENGINEERING



# CORE PROCESS:

**BRAKE**  
ENGINEERING

## A DAY IN THE LIFE OF A BRAKE ENGINEERING CALIPER



## THE FULL LINE BRAKING SUPPLIER



**DISCS AND DRUMS**



**PADS AND SHOES**



**HYDRAULICS**



**CALIPERS**

ORIGINAL AFTERMARKET SINCE 1981

[www.brake-eng.com](http://www.brake-eng.com)

# POWER YOUR ADVENTURE



**All of the world's top motorcycle brands fit Yuasa batteries as standard**

Motorcycle manufacturers demand the best so overwhelmingly choose Yuasa batteries.

With over 40 years of development, every Yuasa motorcycle battery provides the same high performance, quality and reliability as your bike's original.

Find the right battery at  
**[www.yuasa.com/bike](http://www.yuasa.com/bike)**

**YUASA**  **BATTERY**

by  **GS YUASA**





## Performance Motor Oil Eco-FO 0W-20

- Fully synthetic, low viscosity engine oil specifically developed for Ford EcoBlue diesel engines where Ford WSS-M2C952-A1 is required.
- Provides excellent low speed pre-ignition (LSPI) protection
- Delivers high fuel economy performance, whilst maintaining exceptional wear protection.

## Confidence comes from within

Comma engine oils have been chosen by professional workshop technicians for over 50 years. Our updated Performance Motor Oil range includes a new grade to offer even greater vehicle coverage. Every product meets tough international standards and is quality tested against stringent guidelines, and that's why when we say *Confidence comes from within*, we can prove it.

Contact your local Comma stockist or visit [CommaOil.com](http://CommaOil.com) for more information.



# GREAT DEALS ON THESE WELDING ESSENTIALS!



ONLY  
**£49.99**

## 064973 WELDING HELMET – BONES

Fully automatic, the mask switches from clear to tinted state in a fraction of a second as soon as it is primed

- Mask with headband
- Face and neck completely protected
- UV/IR Protection: DIN 15
- Tint adjustable from 9 to 13
- Clear Shade: 4
- Adjustment buttons (sensitivity/time delay/tinting/grinding)
- TRUE COLOR technology



ONLY  
**£49.99**

## 064980 WELDING HELMET – IRON

Fully automatic, the mask switches from clear to tinted state in a fraction of a second as soon as it is primed

- Mask with headband
- Face and neck completely protected
- UV/IR Protection: DIN 15
- Tint adjustable from 9 to 13
- Clear Shade: 4
- Adjustment buttons (sensitivity/time delay/tinting/grinding)
- TRUE COLOR technology

### GREAT VALUE PACKAGE DEAL!

## U31876 GYS EASYMIG 140 INVERTER MIG WELDER

INCLUDES:

### FREE WELDING HELMET, GLOVES & WIRE

- 240v Supply
- 3 in 1 multi-purpose welder
- MIG/MAG & ARC Welding
- Can be used on: Steel, Stainless Steel & Aluminium
- Inverter technology
- Easy to set up with the EASY interface
- Lightweight & Versatile



ONLY  
**£499.00**

### EXCEPTIONAL VALUE PACKAGE DEAL!

## U13612 GYS MULTIWELD 160 INVERTER MIG WELDER

INCLUDES:

### FREE WELDING HELMET, GLOVES, WIRE & SURGE PROTECTOR

- 240v Supply
- Multi-process welder
- MIG/MAG & ARC Welding
- Recommended for use on: Steel, Stainless Steel & Aluminium
- Inverter technology
- Integrated wire feeders – 2 drive rolls
- Easy to use intuitive operating interface
- Lightweight & Versatile
- XL wheels for ease of transportation
- Ideal for Workshops



MADE IN FRANCE

ONLY  
**£699.00**

**TO PLACE YOUR ORDER, CALL YOUR LOCAL BRANCH TODAY!**

## Staycation Deals



RTC5500

### 2 in 1 Digital Air Pump & Inflator

- **Inflates a tyre in 4 minutes\***
- **Inflates a single air bed in 2 minutes\*\***  
Can also be used for balls, small inflatables, inflatable boats, kayaks and paddle boards
- **Quick setting digital gauge**  
That automatically stops at the set pressure and remembers pressure until next time. Measures in PSI, BAR and kPA. Switch to air pump mode to rapidly inflate and deflate air beds and other large inflatables

\*Approx based on inflating a 13" tyre to 35PSI  
\*\*Approx based on inflating a single air bed



**£41.08 +VAT**

RTK4

### Flat Tyre Repair Kit

- Made to original car makers specification
- Particle Gel Sealant technology



**£24.76 +VAT**

RTC650BT

### Smart Tyre Inflator

- **Ring Connect enabled**  
Works with Ring Connect App – connecting you to your vehicle
- **Automatic information sourcing**  
The app provides accurate pressure settings for each tyre based on our extensive database
- **Multiple vehicle settings**  
Can store multiple vehicle details to cover all the vehicles in your household



App Controlled

**£31.75 +VAT**

RCT1520

### 2,000kg Tow Rope



**£5.99 +VAT**

RCT1540

### 3,500kg Heavy Duty Tow Rope



**£8.49 +VAT**

RCT1560

### 2,000kg Elasticated Tow Rope



**£6.99 +VAT**

**For more information contact your local branch today!**

www.ringautomotive.com



/ringautomotive





# INVESTMENT KEY FOR AUTO COMPANIES AS MOTORISTS FACE INCREASED CAR REPAIR COSTS

## MAHLE Aftermarket prepares for biggest transformation in motoring history

Tightened legal frameworks, geopolitical uncertainties and technological advancements mean there is a greater need for automotive repairers to upskill and invest in the future in order to provide a credible, affordable choice for vehicle service and repair.

The automotive vehicle parc across Europe is evolving. There are more cars on the road, the average age is increasing and the types of vehicles is the most diverse it has ever been, with electric vehicles joining internal combustion engine models.

Independent motor trade (IMT) repairers account for the majority of UK service, maintenance & repair (SMR) of light vehicles. In addition, independent operators conduct the vast majority of MOT tests, accident repairs, windscreen repairs / replacement mobile / driveway repairs and other services.

There are over 35,000 'all-makes' IMT repairers of various types, located in every city and town and most villages throughout the UK. The IMT service is extremely affordable, accessible and personal.

The trend towards e-mobility has the potential to push drivers away from independent repairers. Small automotive repair businesses will have to invest thousands of pounds in order to effectively repair and maintain electric vehicles, while also being able to offer affordable services to motorists.

More electrical rather than mechanical skills are required by independent businesses and the demands on workshop equipment are increasing massively.

MAHLE Aftermarket UK has restructured to embrace fully this evolving automotive sector, translating its Original Equipment (OE) expertise more robustly into the repair sector, supplying workshops and wholesalers with the right spare parts and service solutions.

MAHLE Aftermarket is helping independent workshops in the introduction of new concepts and services to motorists, providing the necessary equipment, the right spare parts, technical information and training.

Olaf Henning, Corporate Executive Vice President & General Manager MAHLE Aftermarket, said: "The automotive industry is undergoing a massive transformation with e-mobility solutions. MAHLE Aftermarket is positioning itself accordingly to support small businesses with the adoption of new products and services, designed to ensure that they remain the dominant choice for vehicle servicing and repair."

Electric drive Systems



**MAHLE®**

## FOR MORE INFORMATION CONTACT YOUR LOCAL BRANCH



# Celebrating 100 years of supplying Garage Equipment



The pioneers of yesterday - the leaders of today

## MOT AUTOMATED TEST LANES (ATL)

# I'll Give it FIVE

5 Years Warranty

5 Years Servicing

5 Years Calibrations

5 Months - nothing to pay\*

£500 OFF one of FIVE great products\*

Add a Tecalemit Peace of Mind Package to extend the warranty, calibrations and servicing for up to 5 years from just £2,399 / £12.73 p/w

Choose a Premium upgrade package to further enhance the ATL bay and enjoy £500 off\* another piece of Tecalemit garage equipment

from only  
**£116.76**  
per week  
from only  
£21,999  
+ VAT



### PREMIUM PACKAGE

LED Matrix Display & Brake Tester Full Installation Frame  
from just £1,229 / £6.52 p/w



### PREMIUM PLUS PACKAGE

LED Matrix Display\*, Full Installation Frame, Pneumatic Jacking Beam, Floor Strike Plates, Headlamp Beam Tester Upgrade, and Lift Platform Checker Plate Finish  
from just £2,269 / £12.04 p/w

Get £500 off a Tecalemit 2 Post Lift OR Get £500 off a Tecalemit 4 Post Lift OR Get £500 off a Tecalemit Scissor Lift OR Get £500 off a Tecalemit Tyre Equipment OR Get £500 off a Tecalemit Wheel Aligners



\*Based on a 1 year Class IV 3ph Pit package excluding emission tester. \*LED matrix display available for applicable brake testers where it is not supplied as standard. \*Select a Tecalemit ATL bay with a 5 year peace of mind care package, extending the warranty, servicing and calibrations, and either the Premium or Premium Plus upgrade package to claim £500 off another piece of Tecalemit equipment with a value in excess of £1989.00

## 2-POST LIFTS

| Model        | Capacity | Pad Height | Configuration                 |
|--------------|----------|------------|-------------------------------|
| SF/9010/H    | 3.0t     | 90mm       | Mechanical with Baseframe 3ph |
| SF/9230      | 3.0t     | 95mm       | Mechanical Baseless 3ph       |
| SF/9010/H/32 | 3.2t     | 90mm       | Mechanical with Baseframe 3ph |
| SF/9035      | 3.6t     | 90mm       | Mechanical with Baseframe 3ph |
| SF/9224      | 4.0t     | 103mm      | Hydraulic Baseless 3ph        |
| SF/9025      | 5.0t     | 125mm      | Hydraulic Baseless 3ph        |

from only  
**£18.04**  
per week  
from only  
£3,399  
+ VAT

1ph upgrade available on selected models



SF/9010/H shown

- A range of mechanical and hydraulic 2 post lifts
- Base frame and baseless options
- 3ph and 1ph options
- Ideal for servicing or transmission work

## 4-POST LIFTS



SF/9436/SR shown

from only  
**£34.97**  
per week  
from only  
£6,589  
+ VAT

Wheel Alignment Radius Plates with Rear Slip Plates and 1ph upgrade available on selected models

| Model       | Capacity | Min. Height | Platform Length/Configuration                 |
|-------------|----------|-------------|---|
| SF/9436/SR  | 3.5t     | 120mm       | 4.3m Service Lift 3ph upgradable for MOT use* |
| SF/9006     | 4.0t     | 130mm       | 4.5m Compact CI.4 MOT Lift 3ph                |
| SF/9084     | 4.0t     | 165mm       | 5.0m Service Lift 3ph                         |
| SF/9250     | 5.0t     | 170mm       | 5.2m Service Lift 3ph upgradable for MOT use* |
| SF/9257/NPD | 5.0t     | 155mm       | 5.7m Service Lift 3ph upgradable for MOT use* |
| SF/8976     | 6.0t     | 190mm       | 6.0m Service Lift 3ph upgradable for MOT use* |

\*MOT upgrade requires additional jacking beam and radius plates. SF/9006 will require the addition of jacking beam for MOT use.

- A range of lifting capacities and platform lengths
- Surface or recess options
- 3ph and 1ph options
- Radius plates and jacking beam can be fitted for MOT requirements on selected models\*

## SCISSOR LIFTS

- Short platform and full length options
- Mid rise or full height options
- Surface or recess options
- 3ph and 1ph options
- Wheel alignment or ATL MOT options



SF/9190/1/SI shown

from only  
**£17.46**  
per week  
from only  
£3,289  
+ VAT

1ph upgrade available on selected models

| Model         | Capacity | Max. Height | Platform Length/Configuration      |
|---------------|----------|-------------|------------------------------------|
| SF/9130/1/SI* | 3.0t     | 930mm       | 1.4-1.9m Surface Mounted 1ph       |
| SF/8992       | 3.2t     | 1945mm      | 1.4m Surface Mounted 3ph           |
| SF/8994       | 4.0t     | 1900mm      | 1.5-2.0m Recessed 3ph              |
| SF/9095/EV    | 4.5t     | 2100mm      | 4.8m Recessed 3ph                  |
| SF/9065/EV    | 5.0t     | 2100mm      | 5.2m Recessed 3ph                  |
| SF/9440       | 4.0t     | 2180mm      | 4.8m Low Entry Surface Mounted 3ph |

\*SF/9130/1/SI is self-installation only.

Finance options are available. See page 2 for Terms and Conditions.




**BOSCH**

Invented for life

## Gasoline parts for HEV applications

### Bosch current gasoline portfolio for hybrid vehicles

#### How can we define a hybrid vehicle?

A hybrid vehicle is a combination of two or more different powertrains. For passenger and light commercial vehicles, the combination between an electric motor and an internal combustion engine is the most common one. At the same time, it represents a flexible powertrain system that makes reduced CO<sub>2</sub> journeys possible over short distances while increasing efficiency, thus improving the carbon footprint.

#### What are the main benefits of hybrid powertrains?

► **Lower fuel consumption and improved CO<sub>2</sub> balance through regenerative braking.** This represents the recovery of kinetic energy during braking. In a conventional vehicle a majority of the kinetic energy is converted during friction braking into heat and emitted unused into the environment. Hybrid vehicles can use the electric motor to recuperate at least a portion of the kinetic energy and reuse it for acceleration.

► **Pure electric drive** and therefore greater comfort for drivers and passengers due to low noise electric drive, thanks to well-coordinated interplay between the ICE and electric motor.

► **Lower emission production** than ICE, supporting manufacturers to comply with current and future legislation.

#### Are hybrid vehicles popular among customers?

In the first three quarters of 2021, according to ACEA\*, the share of hybrid electric passenger cars (HEV+ mHEV) registrations accounted for 19.4%. If we sum up the PHEV registrations that represent 8.6%, all types of hybrids represent 28% of the total registrations in the European union. In comparison with the first three quarters from 2020, the registration of all hybrids in 2021 has doubled, becoming the most popular alternative powertrain with respect to volumes.

#### What are the future market challenges and what is the Bosch strategy?

The world faces enormous challenges when it comes to energy and climate change. Energy-efficient powertrain systems are a key solution for mastering these challenges. Optimised internal combustion engines and electric drive systems have a key role to play. That is why Bosch continues to develop and improve both types of powertrain. Using state of the art injection systems as well as hybrid and all-electric drives, mobility becomes more efficient, economical and dynamic.

#### What does Bosch offer for gasoline hybrids?

Majority of the manufactured hybrid vehicles have a gasoline engine on board. In the future, the most dominant system for hybrids will be gasoline direct injection (GDI), where Bosch has a leading position in OE for both injectors and pumps. GDI is the key to efficient and economical engines because it reduces the fuel consumption and emissions with enhanced driving dynamics due to direct injection of the fuel into the combustion chamber.

The quality of the engine management parts in hybrids is highly important due to Start/Stop systems instant starting capabilities in cold weather as well. Only parts having an OE level quality can ensure the benefit of hybrid technology in terms of fuel efficiency and Bosch is the right partner for this, offering a wide range of components for hybrids. Although existing and available technology, these parts are essential for the maintenance and good functioning of the gasoline engine.

*For more go here to find the Bosch parts that fits your hybrid vehicle!*

<https://www.boschaftermarket.com/gb/en/parts/>

#### Selection of top EV/HEV applications

| Brand      | Model                      | Fitment Period | Product Type               | Part No.        |
|------------|----------------------------|----------------|----------------------------|-----------------|
| Toyota     | Yaris 1.5 HSD              | 2014 -->       | Ignition Coil              | 0 986 AG0 502   |
| Toyota     | Yaris 1.5 HSD              | 2014 -->       | Fuel Pump                  | 0 986 580 990   |
| Volkswagen | Passat/Golf 1.4 GTE Hybrid | 2015 -->       | Ignition Coil              | 0 986 221 057   |
| Volkswagen | Passat/Golf 1.4 GTE Hybrid | 2015 -->       | High Pressure Injector GDI | . 04/ 3. . 132  |
| Volkswagen | Passat/Golf 1.4 GTE Hybrid | 2015 -->       | Oncob Sensor               | . 764 06. 4/ .  |
| Volkswagen | Passat/Golf 1.4 GTE Hybrid | 2015 -->       | K_l ghjb Pccqqscc Scl qmp  | . 06/ . . 0 754 |
| Volkswagen | Passat/Golf 1.4 GTE Hybrid | 2015 -->       | I l mai Scl qmp            | . 04/ 01/ / 24  |
| BMW        | 225 xe Active Tourer       | 2015 -->       | Ignition Coil              | . 764 00/ / 02  |
| BMW        | 225 xe Active Tourer       | 2015 -->       | High Pressure Injector GDI | . 04/ 3. . 32/  |
| BMW        | 225 xe Active Tourer       | 2015 -->       | High Pressure Pump GDI     | . 04/ 30. 026   |
| BMW        | 225 xe Active Tourer       | 2015 -->       | Oxygen Sensor              | . 036 . 05 . 61 |
| BMW        | 225 xe Active Tourer       | 2015 -->       | Knock Sensor               | 0 261 231 224   |
| BMW        | 225 xe Active Tourer       | 2015 -->       | Fuel Pump                  | 0 580 200 526   |







The turbocharger people



**Garrett**  
ADVANCING MOTION



**BorgWarner**



**MITSUBISHI**  
TURBOCHARGERS

BTN Turbo is the only supplier of all major turbocharger brands. Technical helpline available for diagnostic information on 01895 466663 or [www.btnturbo.com](http://www.btnturbo.com)





# SGS GASES

RENT FREE  
WELDING  
GAS

ARGON MIX - PURE ARGON - OXYGEN - PRO FUEL - NITROGEN

SGS Gases offer a range of Nitrogen (OFN) and Leaktrace (5% Hydrogen/Nitrogen) cylinders, perfect for testing automotive A/C systems safely and legally. With the rising prices of refrigerant gases and exciting new developments within the industry, it is vital now more than ever to be finding even the smallest and slowest of leaks!

Our range of equipment caters for both R134a and R1234yf testing. From a simple pressure test with Nitrogen, to a thorough pipe check using the advanced and highly accurate Mastercool Intella Sense III. We have your equipment needs covered!

## AIR-CON TESTING EQUIPMENT NEW TO RANGE!

|            | R134a Pressure (Low) | R1234YF (Low) | High Side Couplers | Intella Sense III Detector |
|------------|----------------------|---------------|--------------------|----------------------------|
| PTK10R134a | X                    |               |                    |                            |
| PTK20R134a | X                    |               |                    |                            |
| PTK10Plus  | X                    | X             |                    |                            |
| PTK20Plus  | X                    | X             |                    |                            |
| PTK10Full  | X                    | X             | X                  |                            |
| PTK20Full  | X                    | X             | X                  |                            |
| PTK10Smart | X                    | X             | X                  | X                          |
| PTK20Smart | X                    | X             | X                  | X                          |



Trolley



Regulator



Selected Testing Pack

+

+

INCLUDED IN SMART KITS ONLY



Mastercool Intella Sense III

All cylinders and gases sold separately!

CONTACT YOUR LOCAL BRANCH TO FIND OUT MORE!





Confidence comes from within

# Comprehensive Comma Products Range

For enhanced performance or reduced emissions, look no further than Comma's fuel additives



## Air Con Cleaner

150ml

Effectively eliminates bacteria, fungi, moulds and viruses from the air conditioning system, which cause unpleasant odours, hay fever symptoms and other allergic reactions. Deodorises upholstery and carpets to bring back the new car smell.

## Engine Flush

400ml

Synthetically fortified oil additive, designed to quickly clean the inside of an engine before an oil change.

## Petrol Magic

400ml

Concentrated petrol additive rapidly removes harmful deposits. Restores lost power and acceleration. Increases fuel emissions. Helps to eliminate stalling and hesitation.

## Diesel Magic

400ml

Concentrated diesel additive rapidly removes harmful deposits. Restores lost power and acceleration. Helps increase fuel economy. Reduces engine emissions. Improves cold start performance. Contains cetane improver to boost performance.



**Engine Oil & Coolant Check:** When it comes to engine oil related problems, not using the right oil, exceeding service intervals and running the vehicle low on oil are all main causes of problems. Hence, all vehicles that come into a workshop should have their engine oil grade, level and service interval checked. The same maintenance principles described above also apply to antifreeze & coolant.

## The Role of Engine Flush

If the wrong oil or coolant grade is being used or the service interval has been exceeded, the safest thing to do might be a complete flush and refill with the right product. This will help removing the harmful contaminants before the fluid change and will also inhibit the build-up of harmful deposits in the future. To flush the engine oil system use Flush Out or Petrol & Diesel Engine Flush. To flush the cooling system we recommend a mixture of ironside water mixed with 15% of the correct coolant.

Visit [CommaOil.com](http://CommaOil.com) for more information.





## The Fast and the Klarius

When you need the right replacement exhaust quick, choosing a solution from the biggest, fastest and best supplier is key. With the largest European stockholding of aftermarket exhausts and the widest range in the UK available with next morning delivery to stockists, choosing Klarius will always help you win the race to the fastest exhaust repair.

### Biggest team on the grid

Our warehouses in Staffordshire contain 130,000 items ready for immediate dispatch to suppliers, with a large amount of popular stock also held at distributor facilities. The entire range of over 11,000 parts supports the replacement needs of 24 million vehicles on UK roads. We have the biggest selection, the largest stockholding and the best UK car parc coverage.

Keen to consolidate our lead, we are now pulling further away from the competition. Through our new-to-range programme, we are adding new exhausts for the latest diesel, petrol and hybrid models. Ultimately, Klarius is constantly developing new products to ensure that garages can carry out best-in-class repairs today and in the years to come.

- Expanding range of 11,000+ parts to fit over 24 million UK vehicles
- Unrivalled choice for replacement exhausts from stock
- Aftermarket support for the latest car and van models.

### In pole position

While Klarius may have a fantastic range, it's delivering these parts to garages when they actually need them that is the important bit. Consequently, we ensure that whether you require an exhaust for a new Renault or an old Saab, both are available with next morning UK delivery to stockists and distributors.

We top up stock when needed, so that popular and niche components both have equal availability. The range offers replacement parts to fit vehicles of almost any make, model and age – all products are raring to go.

Thanks to our market-leading availability, we can help you get the part you need, when you need it.

- Equal stock availability across the range
- Topping up stockists and distributors when they need it
- Dedicated logistics network ensures robust supply

### Quality comes first

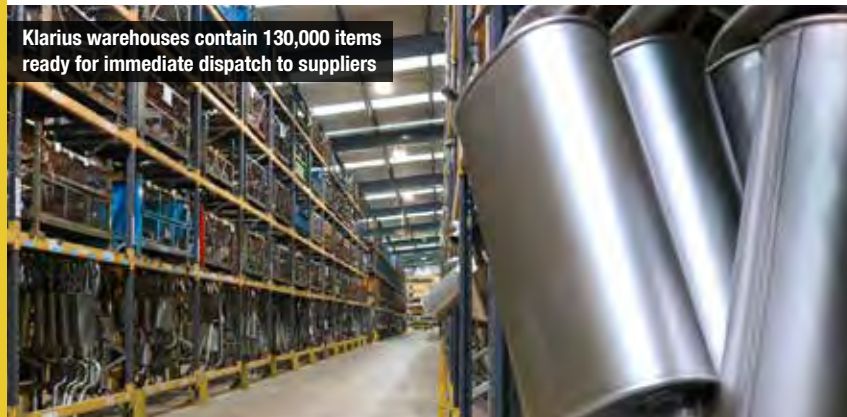
There's nothing worse for a garage than receiving a faulty component. Not much point winning the race to completing a repair if the exhaust doesn't fit. Klarius works hard to deliver high-quality products that match the needs of the intended vehicle.

Each of our parts is developed and tested on vehicles of correct make, model and production year – ensuring optimum fit and performance that meets or exceeds that of the OEM part. This is further evidenced by type-approval from the Vehicle Certification Agency (VCA) in the UK and the TÜV in Europe for all applicable parts. Want more proof? Every Klarius product has a 2-year standard warranty and a Fit First Time guarantee.

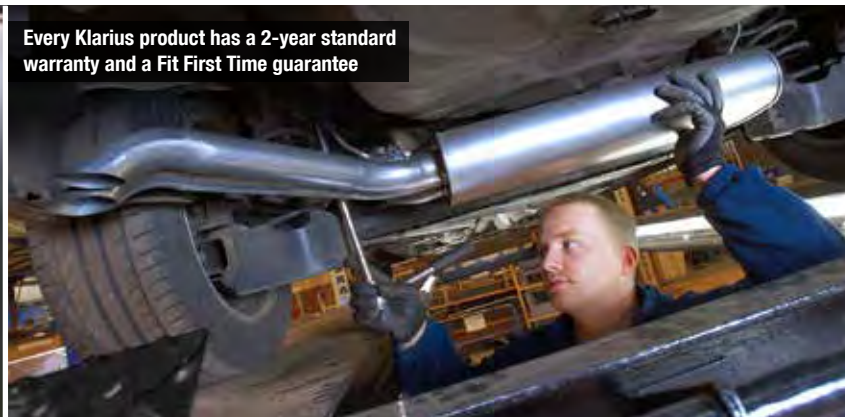
Putting quality first means faster repairs and no time-consuming returns. Garages get the right part first time, ensuring customer vehicles spend less time on the ramp and technicians have less headaches. A good result all round.

- Type-approved parts
- Fit First Time guarantee and 2-year standard warranty
- Parts that meet or exceed the performance of OEM

Klarius warehouses contain 130,000 items ready for immediate dispatch to suppliers



Every Klarius product has a 2-year standard warranty and a Fit First Time guarantee



## For more information contact your local branch today!





”

## SMP EUROPE BRINGS COLOUR TO ICE HOCKEY WORLD CHAMPIONSHIPS

Automotive engineering specialist SMP Europe has embraced the passion and excitement of this year's International Ice Hockey Federation (IIHF) World Championships in Finland, being main sponsor for the Great Britain team.

Taking place from 13 to 29 May in Finland's capital Helsinki and vibrant city of Tampere, the Great Britain team jersey featured the SMP Europe logo in pink, as part of the company's breast cancer awareness campaign.

Supported by the traveling 'Barmy Army', the Great Britain team proved extremely popular with fans from other countries, often being adopted as a "second team" to support in the tournament.

While not expecting to win the tournament, Great Britain more than held their own, providing a stern test for the 'big' nations Czechia, Sweden, Finland and the USA, whilst serving up hugely entertaining matches against Norway, Latvia and Austria.





With a global TV audience of over 1.6 billion, broadcasted to over 150 territories and 100million views of social media content, the tournament represents a fantastic opportunity for SMP Europe to promote its engineering expertise in engine management and ignition to export markets.

More than 450,000 people attended the matches in total, with 16 teams from around the world competing. Before the coronavirus pandemic, Ice Hockey was the most watched indoor sport in the UK and third most popular winter sport, behind rugby and football.

SMP Europe Managing Director, Ross Toomey, said: “Our support of Team GB gives us an opportunity to promote what we stand for in terms of our engineering expertise to an expanding customer base across the world. The tournament was a huge success and builds up momentum ahead of our attendance at Automechanika Frankfurt.

“Furthermore, the pink SMP Europe logo helps raise much needed awareness and funds for Breast Cancer charities, as part of our ongoing campaign.”



Unfortunately for Great Britain, they suffered relegation from the World Championship after defeat in their final game against Austria. They will now drop down to group 1a for 2023, which will be hosted in Nottingham April 29th to May 5th. Great Britain will face Italy, Korea, Lithuania, Poland and Romania, with hopes for an immediate return to the top level.





## QUALITY WITHOUT COMPROMISE



### High Quality is given for all MANN+HUMMEL brands.

The high quality of WIX Filters products results from the broad expertise of MANN+HUMMEL – our company and the leading supplier of original filters for the largest car manufacturers in the world. MANN+HUMMEL is the world leader in filtration technology.



Each new product undergoes a series of tests carried out in our own and independent laboratories. WIX Filters brand manufacturer has quality management systems that meet **ISO 9001, IATF 16949 and ISO 14001:2015** environmental standards.

*Part of the MANN+HUMMEL Group*

Find out more about **WIX Filters**

[www.wixeuropa.com](http://www.wixeuropa.com)

[facebook.com/wixeuropa](https://facebook.com/wixeuropa) 





# TECHNICAL HOTLINES

NEED SOME ADVICE TO FIT A REPLACEMENT PART? OR HELP FINDING IT? OUR COMPREHENSIVE CHECKLIST PUTS ALL THE CONTACT DETAILS FOR THE SUPPLIER YOU NEED AT YOUR FINGERTIPS!



|  |   |   |  |  |
|--|---|---|--|--|
| <b>APEC</b><br><br><b>T</b> TECHMATE: 01174 288090<br><b>e</b> TECHMATE@apecbraking.co.uk<br><b>w</b> www.apecbraking.co.uk/<br>Services/Technical-Support.aspx  | <b>CARWOOD</b><br><br><b>T</b> Carwood Birmingham 01215<br>529 524   Ollerton Turbocharger<br>Facility 01623 867 999<br><b>w</b> www.carwood.co.uk            | <b>GYS</b><br><br><b>T</b> 01926 338609 (main number)<br>tech guide to working safely<br>with batteries:<br><b>w</b> www.gys-welding.com  | <b>NISSENS</b><br><br><b>T</b> 02476 470340<br><b>e</b> Engine cooling: dr@nissens.com<br><b>e</b> AC products: data@nissens.com<br><b>w</b> www.nissens.com | <b>SNAP-ON</b><br><br><b>T</b> 01553 697233<br><b>e</b> ukequipment@snapon.com<br><b>w</b> www.uk.hofmann-equipment.com                            |
| <b>AST TOOLS</b><br><br><b>T</b> 01527 522 550   | <b>CDTI</b><br><br><b>T</b> 01883 621 048<br><b>e</b> info@cdti.com   | <b>HELLA</b><br><br><b>T</b> 01295 662400<br><b>w</b> www.hella.com/techworld/uk/   | <b>PICO</b><br><br><b>T</b> 01480 396 395<br><b>e</b> support@picotech.com<br><b>w</b> www.picotech.com  | <b>TECALEMIT</b><br><br><b>T</b> 01752 219100<br><b>w</b> www.tecalemit.co.uk/<br>equipment-we-supply  |
| <b>AUTO AIR GLOUCESTER</b><br><br><b>T</b> 0843 3304097<br><b>w</b> www.autoairglos.net  | <b>COMMA</b><br><br><b>T</b> 01474 546 318<br><b>e</b> Comma Oil Finder<br><b>w</b> www.uk.commaoil.com   | <b>IVOR SEARLE</b><br><br><b>T</b> 01353 727658<br><b>e</b> warranty@ivorsearle.co.uk<br><b>w</b> www.ivorsearle.co.uk  | <b>REMY</b><br><br><b>T</b> 0121 313 5200  | <b>TETROSYL</b><br><br><b>T</b> 0161 762 6789<br><b>e</b> automotive@tetrosyl.com<br><b>w</b> www.tetrosyl.com                                     |
| <b>AUTEL</b><br><br><b>T</b> 03330 129959<br><b>e</b> hello@autel.uk<br><b>w</b> www.autel.uk  | <b>COOLZONE AUTOMOTIVE</b><br><br><b>T</b> 0843 3304097   | <b>KLARIUS</b><br><br><b>T</b> 01538 752561<br><b>w</b> www.klarius.eu/techtalk/  | <b>RING</b><br><br><b>T</b> 0113 2137329<br><b>w</b> www.ringautomotive.com  | <b>THERMOBILE</b><br><br><b>T</b> 02476 357960<br><b>e</b> sales@thermobile.co.uk  |
| <b>AUTODATA</b><br><br><b>T</b> 01628 688111   | <b>DAYCO</b><br><br><b>e</b> info.uk@dayco.com<br><b>w</b> www.daycoaftermarket.com   | <b>KYB</b><br><br><b>app</b> Suspension Solutions App<br><b>w</b> www.kyb-europe.com/<br>support-zone/  | <b>SACHS</b><br><br><b>T</b> 0333 240 1123<br><b>e</b> info.zf-services-uk@zf.com<br><b>w</b> www.aftermarket.zf.com/uk                                      | <b>TRUPART</b><br><br><b>w</b> Fitting guides:<br>www.trupart.co.uk/p17.htm  |
| <b>BECKERMANN</b><br><br><b>T</b> 01675 437 429<br><b>e</b> help@beckermann.co.uk<br><b>w</b> www.beckermann.co.uk/<br>www.eltaeurope.com  | <b>DELPHI</b><br><br><b>T</b> 0203 8161 400<br><b>e</b> support.uk@delphi.com<br><b>w</b> www.delphiautoparts.com   | <b>LASER TOOLS</b><br><br><b>T</b> 01926 818181<br><b>e</b> technical@toolconnection.co.uk<br><b>w</b> www.toolconnection.co.uk   | <b>SAMOA LTD</b><br><br><b>T</b> 01942 850600<br><b>e</b> info@samoaltd.co.uk<br><b>w</b> www.samoaltd.co.uk   | <b>TRW</b><br><br><b>T</b> 01978 667 800<br><b>e</b> cst.uk@trw.com<br><b>w</b> www.trwaftermarket.com   |
| <b>BESTPLATE</b><br><br><b>T</b> 01253 475217<br><b>e</b> technical@bestplate.com<br><b>w</b> www.bestplate.com  | <b>DENSO</b><br><br><b>T</b> 02476 843410<br><b>w</b> www.denso-am.co.uk  | <b>LAUNCH</b><br><br><b>T</b> 01752 344989<br><b>e</b> enquiries@launchtech.co.uk<br><b>w</b> www.launchtech.co.uk  | <b>SCHAEFFLER</b><br><br><b>T</b> 01432 264264<br><b>e</b> aftermarket.uk@schaeffler.com<br><b>w</b> www.repxpert.co.uk                                      | <b>VALEO</b><br><br><b>T</b> 01527 838 300 (Option 2)<br><b>e</b> vsa.uk.technical.mailbox@valeo.com   |
| <b>BGA</b><br><br><b>T</b> 01793 491 777 (option 6)<br><b>e</b> sales@bgautomotive.co.uk<br><b>w</b> www.bgautomotive.co.uk  | <b>DRAPER TOOLS</b><br><br><b>T</b> 02380341615<br><b>e</b> sales@drapertools.com<br><b>w</b> www.drapertools.com   | <b>MAHLE</b><br><br><b>T</b> 0845 688 5007<br><b>w</b> www.mahle-aftermarket.com/eu/en/services/technical-messenger/<br>MPulse<br>(Online Mag for Garages):<br>www.mpulse.mahle.com/en/ | <b>SEALEY</b><br><br><b>T</b> 01284 757505<br><b>w</b> www.sealey.co.uk  | <b>WIX</b><br><br><b>T</b> 01604 417 700<br><b>e</b> wix.support@mann-hummel-ft.com<br><b>app</b> Wix Catalogue App<br><b>w</b> www.wixfilters.com |
| <b>BLUE PRINT &amp; FEBI</b><br><br><b>T</b> 01246 479081<br><b>e</b> fen-technical.sales@bilsteingroup.com<br><b>w</b> partsfinder.bilsteingroup.com  | <b>ELRING</b><br><br><b>T</b> 0191 491 5678<br><b>e</b> sales@elringparts.co.uk<br><b>w</b> www.elring.com/en/auto-workshop/technical-training-elring-academy | <b>METELLI</b><br><br><b>w</b> www.metelli.com/en/<br>Support/Handbooks   | <b>SERENCO</b><br><b>T</b> Michael Darling 07720 826350<br><b>e</b> md@serenco.co.uk   | <b>WYNNS</b><br><br><b>T</b> 02476 472634<br><b>e</b> helpline@wynns.uk.com<br><b>w</b> www.wynns.uk.com   |
| <b>BM CATALYSTS</b><br><br><b>T</b> 01623 663802<br><b>app</b> www.bmcatalysts.co.uk/<br>technical-information/  | <b>EUROFLO</b><br><br><b>app</b> www.euroflo.co.uk  | <b>MISWA</b><br><br><b>T</b> 01604 701111<br><b>w</b> www.miswa.com   | <b>SGS</b><br><br><b>T</b> 01934 751 265 (James / Alan)  | <b>YUASA</b><br><br><b>T</b> 01793 833 555<br><b>e</b> info@gs-yuasa.uk  |
| <b>BRAKE ENGINEERING</b><br><br><b>T</b> 01978 667 811<br><b>e</b> technical@brake-eng.com<br><b>app</b> ZF Part Finder<br><b>w</b> www.brake-eng.com<br>www.zf.com/unitedkingdom/en_gb/corporate/aftermarket/protech_folder_uk/protech_main_page.html | <b>FERODO</b><br><br><b>T</b> 00800-33337256<br><b>e</b> support@fmgurusoncall.tech<br><b>w</b> www.fmggaragegurus.eu &<br>www.ferodo.co.uk                   | <b>MOOG</b><br><br><b>T</b> FREE 00800 3333 7256<br><b>w</b> www.moogparts.co.uk/<br>support/light-vehicles/<br>technical-tips.html   | <b>SKF</b><br><br><b>T</b> 01582 496334<br><b>e</b> helpline@skf.com<br><b>w</b> www.vsm.skf.com   |  |
| <b>BTN TURBO</b><br><br><b>T</b> 0117 428 8107<br><b>e</b> technical@bnturbo.com<br><b>w</b> www.bnturbo.com/turbotech/  | <b>GATES</b><br><br><b>T</b> 0844 980 0062<br><b>e</b> info@gatestechnical.com<br><b>w</b> www.gatestechnical.com   | <b>NGK</b><br><br><b>T</b> 01442 281000<br><b>w</b> www.ngkntk.co.uk  | <b>SIP</b><br><br><b>T</b> 01509 500400<br><b>e</b> technical@sip-group.com<br><b>w</b> www.sip-group.com/page/techzone.aspx                                 |  |

**HERE TO HELP**  
FOR MORE  
INFORMATION ABOUT  
THE PRODUCTS AND  
THE SERVICES WE  
OFFER CALL YOUR  
LOCAL BRANCH!  
**SEE BACK PAGE  
FOR DETAILS.**



# Planet High Performance Lubricants

Provides a servicing solution that meets latest industry standards

**7 grades, available in 199 litre barrels:**

**Synthetic 5w/30 ACEA C2 C3**

**Synthetic 5w/30 ACEA C3**

**5w/30 Longlife VW 504/507**

**Semi Synthetic 5w/30 ACEA A1 B1**

**Semi Synthetic 10w/40 ACEA A3 B4**

**Synthetic 5w/30 FMC**

**Synthetic 0w/30 ACEA C2**

Available exclusively in the UK through the IFA, the leading Motor Factor buying group who distribute motor vehicle components, workshop equipment and automotive tools through over 200 branches located in England, Scotland, Wales and Ireland.

[www.planetoil.co.uk](http://www.planetoil.co.uk)



THE **SMARTCHOICE**

## Automotive Parts Distribution Ltd

Where professionals buy car supplies

**THERE'S A BRANCH NEAR YOU**

**NEW BRANCH!**

**BATH**  
TEL: 01225 424 221

**NORWICH**  
TEL: 01603 486 020

**SWINDON**  
TEL: 01793 821 715

**GLASTONBURY**  
TEL: 01458 832 915

**READING**  
TEL: 01189 110949

**HIGH WYCOMBE**  
TEL: 01494 321636

[www.apd.co.uk](http://www.apd.co.uk)